

SUCCESS STORY

2 for 1: Two Medical Facilities Equal One Plan

HOK, a global design, architecture, engineering and planning firm, was engaged to **design two projects simultaneously for one of the largest healthcare providers in the United States. Each building spanned 200,000 square feet** and shared many common elements, although the buildings were not identical. Rather than duplicate efforts, HOK turned to dRofus as the single planning and data management solution for both projects. “We wanted to share as much information as possible to make them as consistent as possible,” said Brent Martin, Associate at HOK, who worked on both projects. By using dRofus “we’ve done that!”

40 Departments, 800 Families, 1700 Rooms in One Plan

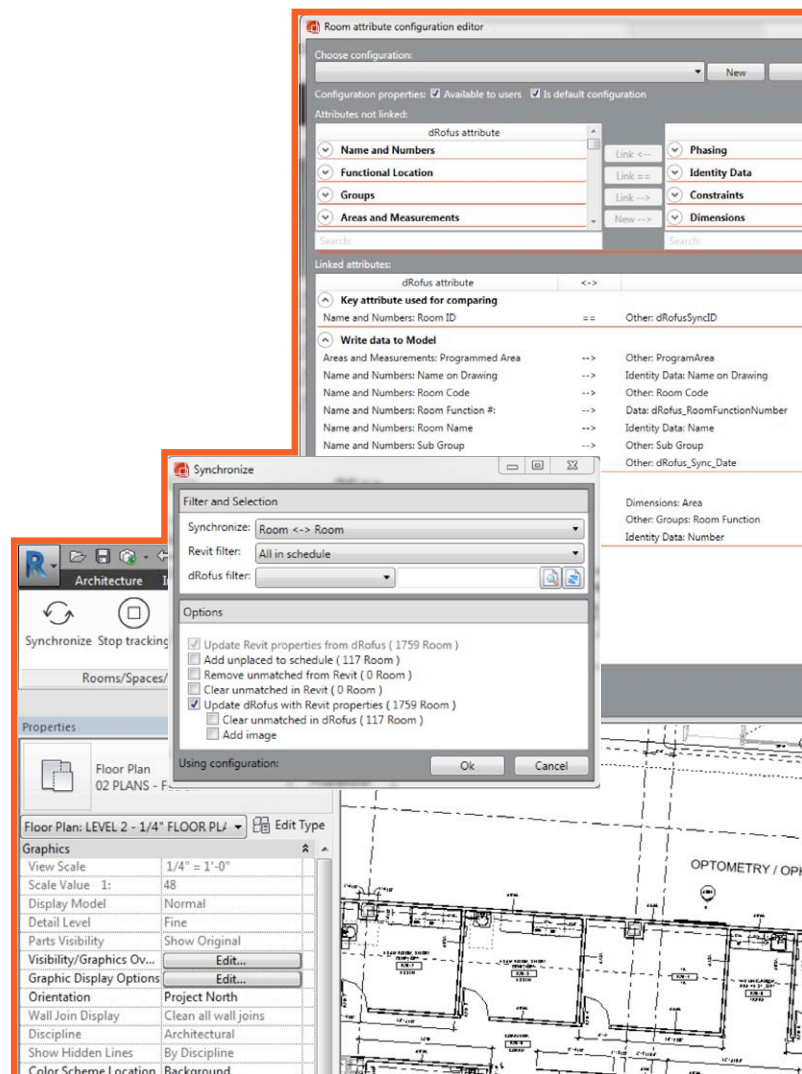
The client provided HOK with a static Excel program that contained details about the **40 departments & 1700 rooms for each building** which shared the same room codes and naming conventions. HOK used dRofus to transform this information into a data-driven representation based upon the client’s program, while incorporating details for square footage, graphics and parameters. “dRofus provided the database and functional structure to make the models very robust and created a single codebase that could be shared across both projects,” said Brent.

HOK imported the client’s **FFE lists into dRofus to create a dynamic user interface that drove over 800 Revit families** shared across both projects. The equipment information shared with Revit only included relevant parameter data and simple geometries which “kept the models elegant and clean.” From time to time, the client would make changes to the interior equipment & furniture lists. Instead of performing time consuming manual updates, HOK did batch uploads into dRofus which were easily synchronized with the Revit families, updating both data and geometry in the models and immediately reflected in drawings. This capability “was a very powerful function of dRofus” and enabled HOK designers to validate the Revit models and answer the questions “Am I getting it right? Am I close?” said Brent.



“dRofus provided the database and functional structure to make the models very robust and created a single codebase that could be shared across both projects.”

Brent Martin
Associate at HOK



“Considering the projects’ large size and complexity, dRofus allows project teams to be optimized. Team members are able to focus on the important rather than the tedious.”

Pain-free Planning, Placement & Reporting

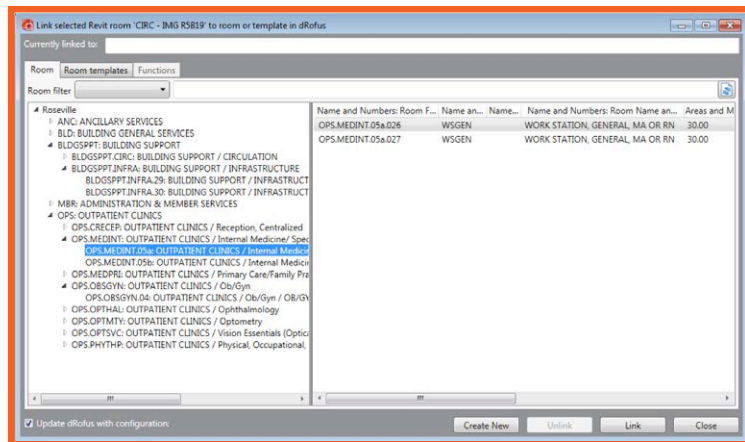
“Tricks” – that’s what the HOK team called many of dRofus’ time-saving and efficiency features. HOK created **“container families” in Revit that represented an entire room layout to place groupings of items that were repeatedly used** throughout the models. The container families included boundaries to validate that items would fit within a room, thus allowing each building’s unique plans to evolve while maintaining shared standards. If an element changed within a container family, it was easy to update that in dRofus and flow it through the models in both projects with one click.

Another favorite feature was “Items in Room” which allowed the HOK team to identify the occurrences of a dRofus item directly inside the Revit model, the quantity and placement. The HOK team relied on dRofus’ Revit add-in to make it easy to pick and place rooms directly into the Revit models.

At times, Revit served as the original source of information and dRofus would transform this data into reports. For example, when the interior design team would come up with a layout in Revit, they would push the data into dRofus and generate budget and equipment reports. In the past, it was “painful and time consuming to prepare these reports – dRofus’ reporting function saved us so much time,” says Brent.

Only So Many Clicks Left in a Hand

dRofus served many valuable functions for this dual project: a single source for planning and design information, program and data validation and streamlined coordination. **Considering the projects’ large size and complexity, dRofus allows project teams to be optimized. Team members are able to focus on the important rather than the tedious.** “I only have so many clicks left in this hand, and I want to draw. I want to take the client’s data and touch it as little as possible, while making sure it makes it into the model.” Brent concluded by saying “dRofus allowed us to redirect activities to areas that architects and engineers want to do.”



About dRofus

The leading planning and data management solution for the global building industry. dRofus is a unique planning, data management and BIM collaboration tool that provides all stakeholders with comprehensive workflow support and access to building information throughout the building lifecycle. We are committed to Open BIM and as part of the Nemetschek Group, our aim is to deliver the best possible, most innovative and most successful AECO software solutions.

dRofus AS | Rådhusgt 17, 0158 Oslo, Norway

Phone: +1.800.541.4890 | info@dروفوس.com | www.dروفوس.com | twitter: @dروفوس